

# SCIP7

Technical Machinery Notes

MULTIPLE ROW PARALLEL CHAIN WELDER & CUTTER - 198

Automatic unit for soldering in parallel multiple rows of chains simultaneously. It is even able to cut out patterns which have been programmed by the operator. It selectively solders, cuts or marks the links with the use of a multiple shot laser.

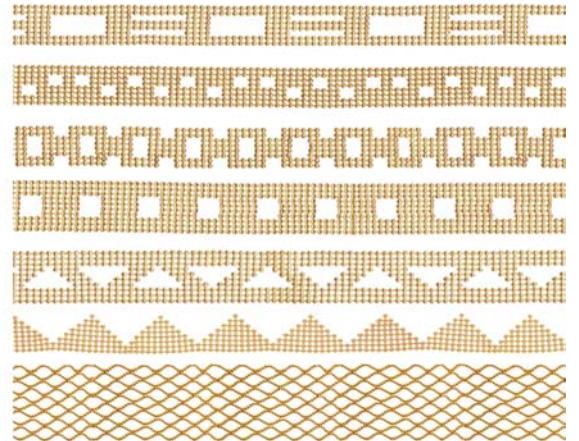
It is equipped with a fully programmable microprocessor controlled control panel which allows an almost infinite series of designs on the chains. Through the use of dedicated software the machine communicates with any PC for programming, storage and downloading programs.

Soldering is carried out using a very sophisticated laser unit at up to 400 shots per minute, producing a quality enhanced product.

Laser soldering signifies high efficiency, low maintenance, reliability and ease of use.



## SCIP 7



### Technical features

Max. production speed	400 links/min
Max. process chain width	30 mm
Wire Ø	from 0.20 to 2.00 mm

### Technical data

Voltage (single phase)	230 V 50/60 HZ
Power	0.15 kW
Compressed air	35 l/min (filtered) at 6 bar
Argon gas	5 l/min at 0.5 bar

Dimensions  
packing

80 x 52 x 169 (h)cm – 83 kg  
185 x 72 x 78 (h) cm – 60 kg

### Notes

Can easily process any kt gold.

Note. The above data, features and characteristics are not binding. CIEMMEO s.r.l. retains the right to vary them at any time without prior notice

CIEMMEO s.r.l. -Via dell'Industria, 22 - 36060 Casoni di Mussolente (VI) - ITALY - V.A.T. Code IT00621600246  
Tel. +39-0424-577565 - Fax +39-0424-577563 - Video +39-0424-578017 - Email [ciemmeo@nsoft.it](mailto:ciemmeo@nsoft.it) - WWW [ciemmeo.com](http://ciemmeo.com)